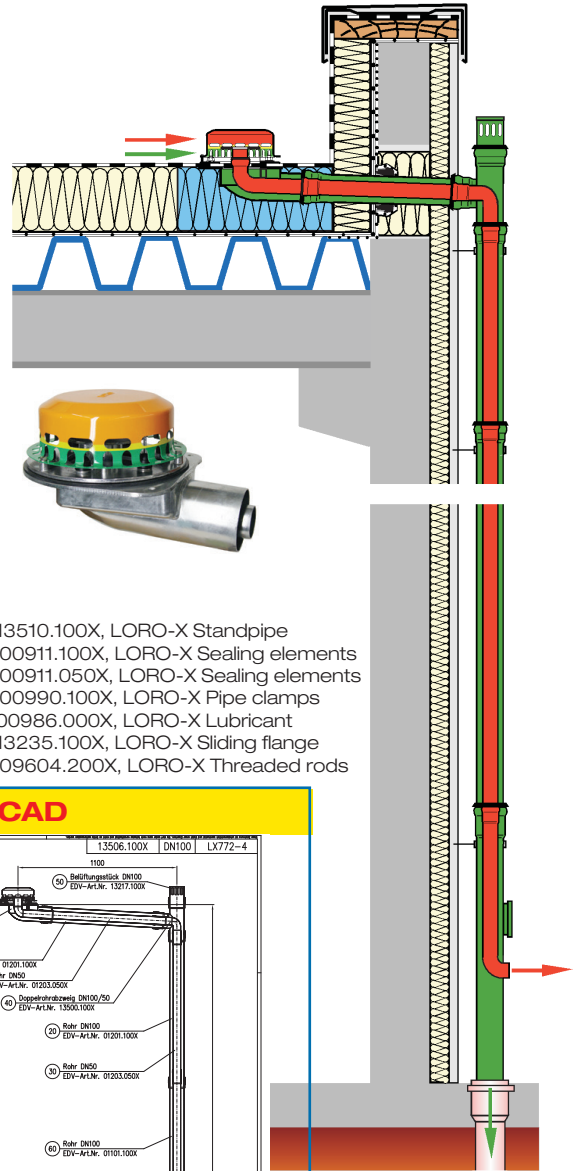


Specification sheet LX 772

Parapet drainage system Series 88 combined main-emergency

combined main-emergency	
Gravity flow	Siphonic flow
Silent	Silent Power
Discharge rate: 4,5 l/sec	Discharge rate: 8,2 l/sec
Water height: 35 mm	Water height: 75 mm
Roof penetraion: 106 mm	Roof penetraion: 106 mm
Diameter: DN 100	Diameter: DN 50
LX-Number: LX 772	LX-Number: LX 772
Weir height: 0 mm	Weir height: 40 mm
Drain: ventilated	Drain: ventilated
Downpipe: ventilated	Downpipe: not ventilated
Downpipe height: min.4,2 m	Downpipe height: min 4,2 m
Drainage: in sewer	Drainage: on floor
Flange form: clamping flange	Flange form: clamping flange

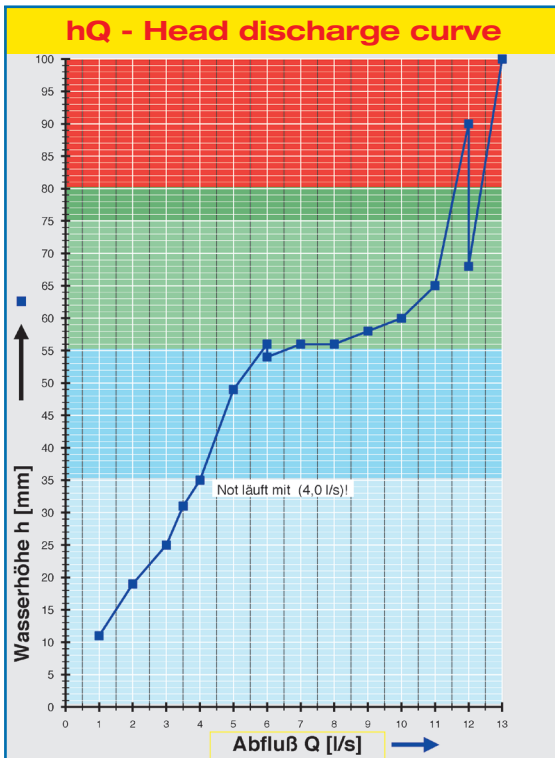


LX 772 Piece list

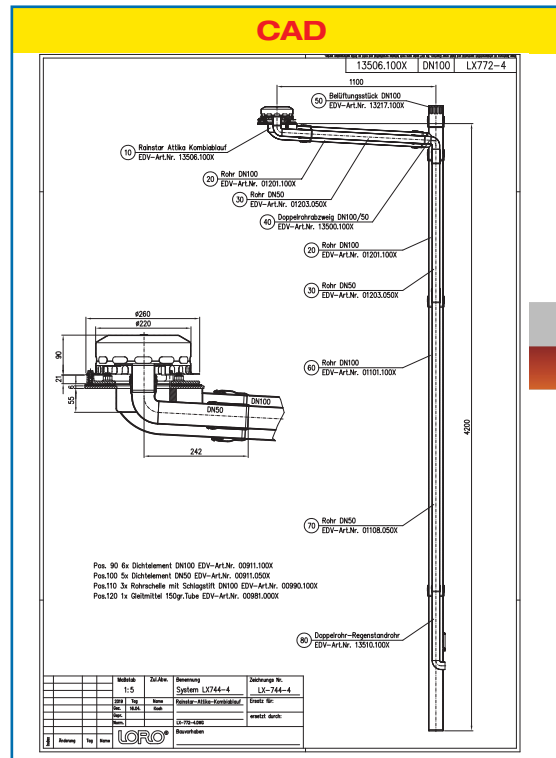
1 x Art.-No. choose drain on page two!

- 2 x article No. 01201.100X, LORO-X Pipe with one socket
- 2 x article No. 01203.050X, LORO-X Pipe with long socket
- 1 x article No. 13217.100X, LORO-X Vent piece
- 1 x article No. 13500.100X, LORO-X Pipe in pipe branch with bend
- 1 x article No. 01101.100X, LORO-X Pipe with one socket
- 1 x article No. 01108.050X, LORO-X Pipe with long socket

- 1 x article No. 13510.100X, LORO-X Standpipe
- 6 x article No. 00911.100X, LORO-X Sealing elements
- 5 x article No. 00911.050X, LORO-X Sealing elements
- 3 x article No. 00990.100X, LORO-X Pipe clamps
- 1 x article No. 00986.000X, LORO-X Lubricant
- 1 x article No. 13235.100X, LORO-X Sliding flange
- 3 x article No. 09604.200X, LORO-X Threaded rods



Systempower



Systemshape

Water height	mm	5	10	15	20	25	30	35	40	45	50	55	60	65	70	75	
Discharge	l/sec	0,5	1,2	1,5	2,1	3	4	4,5	4,7	4,9	5,1	8	12,0	12,3	12,6	12,7	
		Silent							Silent Power								

LORO-X combined main-emergency parapet drainage system

LX772-4X

drain article No.13506.100X
Weight: 7,2 kg

with clamping flange
for bituminous and plastic roofing sheets



LX772-2X

drain article No.13605.100X
Weight: 8,9 kg

with clamping flange 45°
for bituminous roofing sheets



LX772-1X

drain article No.13607.100X
Weight: 8,9 kg

with clamping flange 90°
for plastic roofing sheets

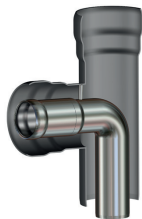


Important: Please order the additional LORO-X system components when placing an order, so as to achieve the drainage performance.

LORO-"pipe in pipe" branch with bend

- for combined LORO-X main-emergency parapet drains, made of hot-dip galvanised steel, DN 100/50,

article No. 13500.100X
Weight: 3,1 kg



LORO-"pipe in pipe" standpipes

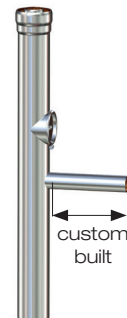
- for combined LORO-X main-emergency parapet drains with inspection hole for cleaning purposes, made of hot-dip galvanised steel, DN 100/50

article No. 13510.100X
Weight: 6,7 kg



for installation behind the facade made of hot-dip galvanised steel, DN 100/50
Attention: Building-related design - please indicate desired Length of outlet pipe when ordering

article No. 13509.100X
Weight: 7,0 kg



LORO-X Pipe with long socket

-emergency drain pipe(inner pipe) for combined LORO-X main & emergency parapet drains, made of hot-dip galvanised steel, DN 50
500 mm long article No. 01302.050X
1000 mm long article No. 01203.050X
2000 mm long article No. 01108.050X



LORO-X Support pipe - pipe in pipe - DN 100/50

Recommended for longer downpipes over 12 m

article No. 13582.100X
Weight: 1,2 kg



LORO-X Vent piece with perforated sheet

- for combined LORO-X main & emergency parapet drains, made of hot-dip galvanised steel, DN 100

article No. 13217.100X
Weight: 0,7 kg



LORO-sealing elements

article No. 00911.050X

article No. 00911.100X

LORO-pipe clamps

article No. 00990.100X

Important: Additional bends may only be installed after consultation with LOROWERK. A cleaning pipe 00550.100X must be installed in front of each bend for maintenance purposes.

Heat tracing: Lorowerk recommends to check all drains and pipes with regard to their frost-sensibility. Where necessary, these parts should be upgraded with heat tracing.